

## Personal Protective Equipment: DISINFECTION AND STORAGE

Disinfection and Storage of N95 Respirator and Eye Protection for Reuse

The following procedure must take place outside the patient room or care area.  
NEVER reuse PPE that becomes damaged or soiled during patient care activities.

### SET UP

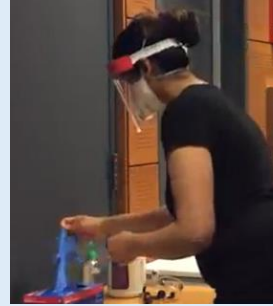
You will need:

- Fresh gloves
- Disinfectant wipes
- Disposable paper bags (2)

1. Perform hand hygiene.



2. Wear fresh gloves.



3. Label paper bags and keep upright. Set up disinfection area by placing wipes on clean surface.



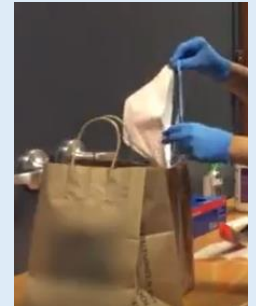
4. Remove eye protection. Place on wipe.



5. Remove N95 respirator. Grasp lower band, followed by upper band, and pull over and away from head.



6. Inspect. Place N95 directly into labelled paper bag.



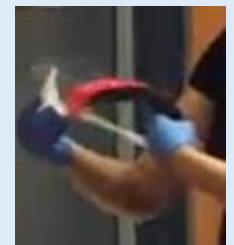
7. Use a fresh disinfectant wipe to disinfect the inside of the face shield or goggles.



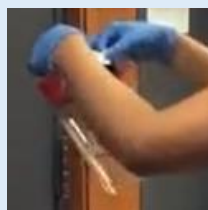
8. Use a fresh disinfectant wipe to disinfect the strap of the face shield or goggles.



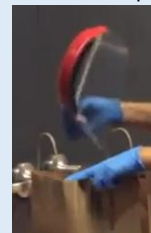
9. Use a fresh disinfectant wipe to disinfect the outside of the face shield or goggles.



10. After appropriate contact time, allow to air dry.



11. Place eye protection directly into second labelled paper bag.



12. Disinfect surface. Remove gloves. Perform hand hygiene. Store bags safely.



### N95 RESPIRATOR

Avoid touching the outer areas of eye protection and respirator.

### EYE PROTECTION